



SHORESEARCH WEEK 2023 REPORT

Five days surveying Cornwall's original VMCA's



Cornwall
Wildlife Trust



1931

Individual Records

Species

229

[Click for a full
species list!](#)

67

Volunteers

Shoresearch week 2023 was our 12th annual week of surveying Cornwall's 5 original VMCA's! Thank you to our awesome volunteers (both new & established citizen scientists) for the significant time and effort given over the week and helping complete 80 quadrats.

Thank you also to our team leaders- Matt Slater, Zeni Hayton, Adele Morgan, and Josh Symes.

We welcomed volunteers from some amazing organisations, including Natural England and the Porcupine Marine Natural History Society.

Cowrie Reef



St Piran's Hermit Crab

Photo: Adele Morgan



Scorpion Fish

Photo: Charlotte Cumming



Snakelocks Anemone

Photo: Adele Morgan



Stalked Jellyfish

Photo: Zeni Hayton



Ballan Wrasse

Photo: Matt Slater



Blue Raped Limpet

Photo: Josh Symes

67
Species

22

Algae

6

Crustaceans

4

Sea
Squirts

1

Bacterium

0

Echinoderms

4

Sponges

1

Bryozoans

1

Fish

3

Worms

8

Cnidarians

14

Molluscs

[Click here for a
full species list!](#)

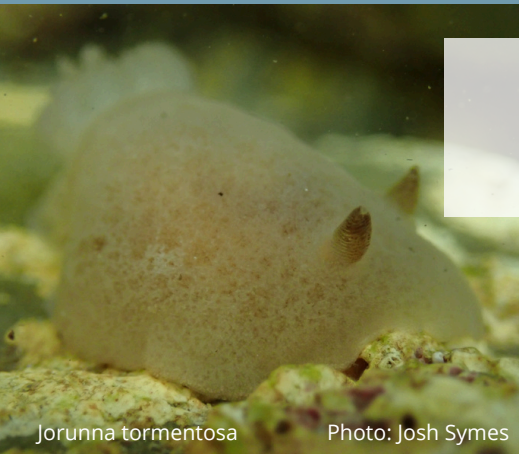
Cowrie reef is within the Polzeath VMCA. It is a exposed area of rocky reef, but has multiple gullies that provide shelter for species, creating lots of biodiversity! This shore is a hotspot for St Pirans hermit crabs as well as anemones and sea slugs.



Cornwall
Wildlife Trust



Hannafore



Jorunna tormentosa

Photo: Josh Symes



Flat Periwinkle

Photo: Josh Symes



Daisy Anemone

Photo: Zeni Hayton



Maltese Cross
Stalked Jellyfish

Photo: Zeni Hayton



Sea Spider

Photo: Josh Symes



Rissos Crab
Photo: Matt Slater

126
Species

40

Algae

15

Crustaceans

13

Sea
Squirts

3

Bryozoans

3

Echinoderms

7

Sponges

9

Cnidarians

16

Fish

4

Worms

19

Molluscs

[Click here for a
full species list!](#)

Hannafore is a very large and diverse area of rocky shore located at Looe, within the Looe and Whitsand bay Marine Conservation Zone. This shore is made up of high shore gravel and pools, huge brown seaweed biotopes and low shore Kelp and Seagrass beds.



Cornwall
Wildlife Trust



Trevaunance Cove

Pheasant Shell

Photo: Zeni Hayton

Blue-rayed Limpets

Photo: Adele Morgan

Kaleidoscope
Stalked Jellyfish

Photo: Charlotte Cumming

Polycera norvegica

Photo: Charlotte Cumming

Spotted Cowrie

Photo: Adele Morgan

Star Ascidian
Photo: Zeni Hayton

96
Species

41

Algae

11

Crustaceans

2

Sea
Squirts

1

Bacterium

3

Echinoderms

5

Sponges

3

Bryozoans

6

Fish

3

Worms

4

Cnidarians

17

Molluscs

[Click here for a
full species list!](#)

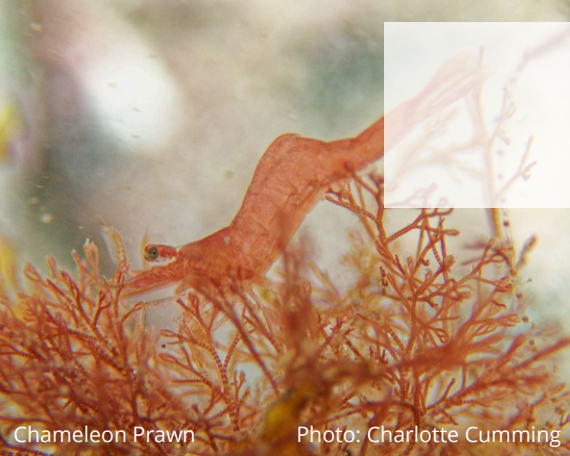
Trevaunance Cove is found within the St Agnes VMCA. This exposed shore is made up of high shore boulders and bedrock, and mid shore pools, creating amazing habitat for large sponge colonies and stalked jellyfish. The cove is also surrounded by large cliffs with stunning geology



Cornwall
Wildlife Trust



Prisk Cove



Chameleon Prawn

Photo: Charlotte Cumming



Green Sea Urchin

Photo: Zeni Hayton



Solar-powered Sea Slug
Photo: Charlotte Cumming



Morchellium argus

Photo: Josh Symes



Velvet Swimmer Crab
Photo: Matt Slater



Shore Crab
Photo: Matt Slater

132
Species

28

Algae

18

Crustaceans

8

Sea
Squirts

1

Bacterium

7

Echinoderms

7

Sponges

4

Bryozoans

9

Worms

9

Cnidarians

28

Molluscs

[Click here for a
full species list!](#)

Prisk Cove is located at the mouth of the Helford River, with an interesting mix of both Estuarine and exposed shore species. Large *Fucus* and *Ascophyllum* biotopes are present, as well as lots of rocks and boulders to look under.



Cornwall
Wildlife Trust



Readymoney Cove



Sea Lemon

Photo: Matt Slater



Ancula gibbosa

Photo: Charlotte Cumming



Sea Squirt

Photo: Adele Morgan



Painted Top Shell

Photo: Adele Morgan



Common Starfish

Photo: Matt Slater



Grey Sea Slug

Photo: Charlotte Cumming

75
Species

22

Algae

9

Crustaceans

4

Sea
Squirts

15

Molluscs

2

Echinoderms

2

Sponges

4

Bryozoans

8

Fish

5

Worms

4

Cnidarians

[Click here for a
full species list!](#)

Readymoney is a small cove located in Fowey within the Fowey VMCA. The rocky shore is short but sheltered, with lots of seaweed and crevices for species to hide.



Cornwall
Wildlife Trust



We were joined by some Marine Biology legends for our 12th year! This included members of the Porcupine society such as Frances Dipper, Doug Herdson, and Keith Hiscock.

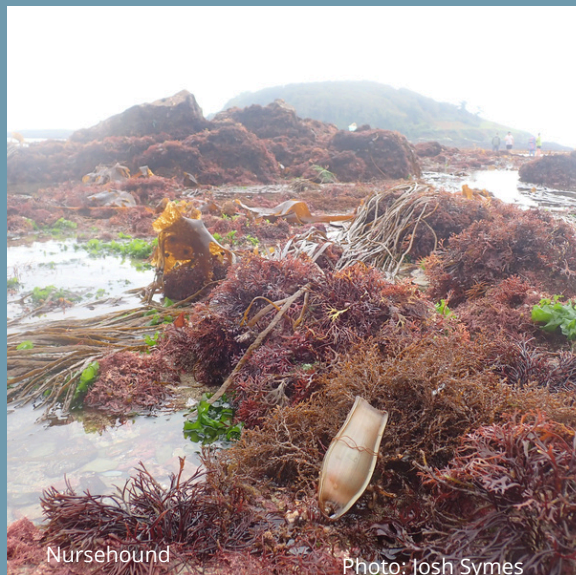


Small-Spotted Catshark

Photo: Zeni Hayton

At Hannaford point (at low tide) and at Prisk cove, volunteers found shark egg cases wrapped around seaweed. These nursery areas have been little studied but seem to be very important for both greater and lesser spotted cat sharks.

One egg case was found by Keith Hiscock that had a tiny embryo cat shark moving about inside



Nursehound

Photo: Josh Symes



Limpet

Photo: Adele Morgan

Many blue limpets were found across multiple shores. We initially thought this beautiful but unusual colouring could be caused by shell erosion, but it's not known what has caused it!





Sea Hare

Photo: Charlotte Cumming



St Piran's Crab
Photo: Zeni Hayton



Polycera norvegica
Photo: Zeni Hayton



Painted Goby

Photo: Josh Symes



Clingfish

Photo: Josh Symes



Shore Crab
Photo: Matt Slater



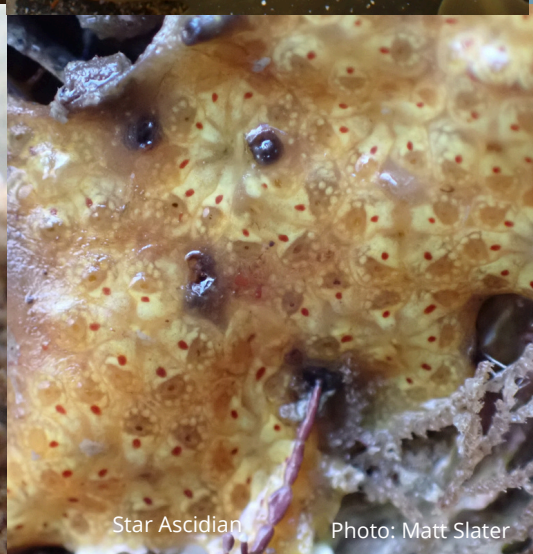
Snakelocks Anemone

Photo: Zeni Hayton



Palio nothus

Photo: Zeni Hayton



Star Ascidian

Photo: Matt Slater

Thank you!
See you next year



Shoresearch