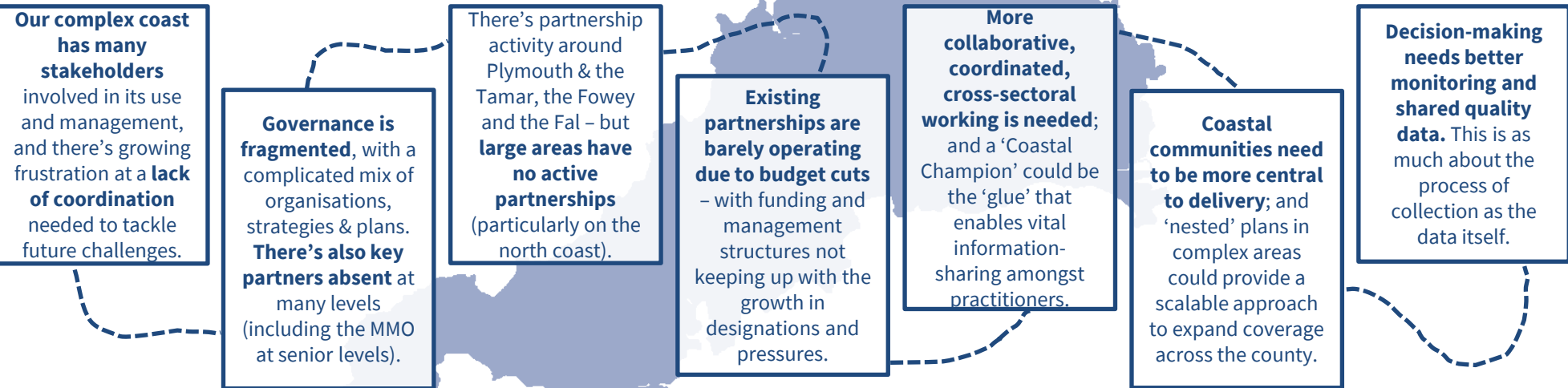


A COASTAL PARTNERSHIP FOR CORNWALL?

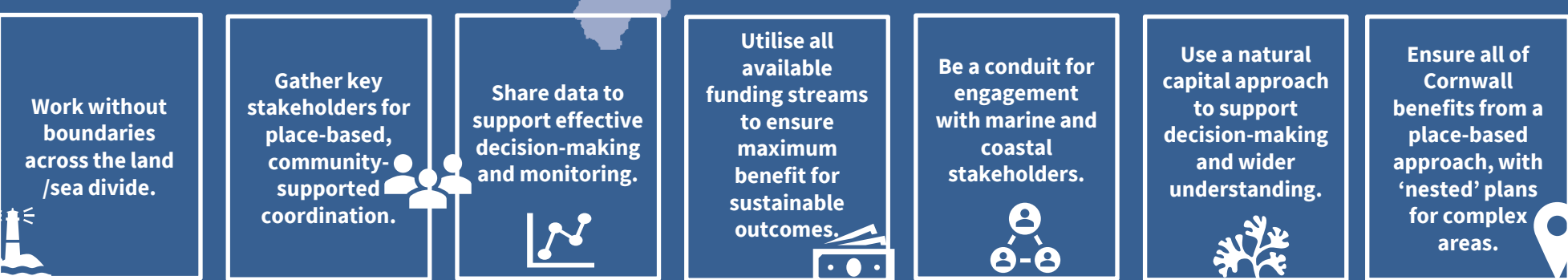
The Championing Coastal Coordination (3Cs) project researched whether a **coastal partnership underpinned by a Coastal Based Approach**, would be an appropriate & cost-effective means for integrated place-based delivery for our coast.

WHAT OUR RESEARCH TOLD US...

WHY DO WE NEED A COASTAL PARTNERSHIP?



WHAT SHOULD A COASTAL PARTNERSHIP DO?



WHAT DO STAKEHOLDERS THINK?

We engaged 53 organisations across 11 sectors, and found overwhelming support for taking a Coastal Based Approach forward for the following reasons...



WHAT WOULD A GOOD COASTAL PARTNERSHIP LOOK LIKE?

There's no single blueprint, but it needs a clear focus, appropriate scale, a suitable host authority, and balanced governance. Key success factors are that it...



KEY RECOMMENDATIONS

- ▶ Coastal Coordination is critical with a 'coastal champion' needed as the 'glue' – but it requires **additional resourcing**.
- ▶ **Further discussions with stakeholders are needed** to confirm the course of action – especially for representation on strategic bodies and clarifying the role of the MMO.
- ▶ **A full business case should be worked up** along with a full risk assessment of the option most likely to match the funding available.

A COASTAL PARTNERSHIP FOR CORNWALL?

The Championing Coastal Coordination (3Cs) project researched whether a **coastal partnership underpinned by a Coastal Based Approach**, would be an appropriate & cost-effective means for integrated place-based delivery for our coast.

THE CASE FOR CHANGE AND OPTIONS...

WHAT IS THE CASE FOR CHANGE?

To better manage the coast to address climate change, biodiversity loss and growing human pressures.

To meet the ambitious targets of various national, regional and county strategies – **and accelerate delivery** with collaborative working.

To fix governance failures, with 96% of survey respondents saying it's complex, lacks vision and isn't integrated across the land-sea interface.

To integrate at all levels for more multifunctional projects with funding strategies to match – bringing key players together to prevent strategies being implemented in isolation.

To better integrate the MMO's statutory Marine Plans – but noting concern about them not being fit for purpose and their lack of strategic senior representation.

Clear evidence of savings & leverage from 40 years' of coastal partnerships and 10 years of Catchment Partnerships.

£34,000 - £120,000 of savings per year for public and private organisations through involvement in coastal partnerships. (Entec 2008)

For every £1 invested by Government, catchment partnerships raise a further £3.20 from the private sector, lottery and Local Authorities. (Collins et al. 2020)

WHAT DOES OUR CHOICE NEED TO CONSIDER?

It is clear that more coordination is needed and that this is only possible with additional funding, with a direct correlation between the amount invested and the benefits delivered. A number of other considerations are vital:

Evidence and Natural Capital Assessments are needed for decision-making and evaluation; and there's value in stakeholder involvement in collection as much as the data itself.

Dedicated staffing is needed, with the right skills & experience to draw different parties together, and not be seen as too aligned to the conservation agenda.

A single GIS portal is needed to be a central point for data on assets & features, and provide open access efficiencies.

More comprehensive geographic cover is needed to better cover the north coast, and integration of the Isles of Scilly (Scilly is not priced into the options at this stage).

Application of Catchment Based Approach metrics would underfund. It provides ~£15k per catchment per annum, but this isn't directly applicable to the coast given its complexity and designations.

WHAT ARE THE OPTIONS?

	Officer	Assistants	Costs & expenses	Management by CMLG	NCA	GIS portal	Coordination Fund	TOTAL COST PER ANNUM	Evaluation
1 Do nothing	X	X	X	X	X	X	X	£0	This will become costly through environmental degradation, stakeholder conflict, and siloed delivery not realising multiple benefits.
	X	X	X	X	X	X	X		
2 Coordinator + Coastal Coordination Fund Use existing partnerships with a small fund for them to bid for – with CMLG overseeing alongside a host authority.	1 FTE	X	✓	✓	X	X	✓	£103k	Meets some objectives and critical success factors but with evidence gaps that ultimately risks weaker coordination, decision-making and monitoring.
	£36k	X	£2k	£5k	X	X	£60k		
3 Coordinator + Coastal Coordination Fund + Minimal NCA & GIS portal As above plus a light touch NCA and GIS portal.	1 FTE	X	✓	✓	Light	✓	✓	£143k	Delivers a good proportion of the identified objectives and critical success factors, but reduced staffing could yield patchy coverage and a light touch NCA will result in insufficient data.
	£36k	X	£2k	£5k	£33k	£7k	£60k		
4 Full county-wide 2-tiered approach + Full NCA & GIS portal A full evidence base for delivery of nested plans & a network of coastal champions	1 FTE	3 0.6 FTE	✓	X	Full	✓	X	£157k	For minimal extra cost this delivers all identified objectives and critical success factors, supporting full delivery of the 25YEP through coordinated action.
	£36k	£53k	£4k	X	£57k	£7k	X		

NEXT STEPS

▶ **Secure resources** for delivery of one of Options 2 – 4.

▶ **Further stakeholder engagement** to confirm course of action (especially on strategic representation and the MMO's role)

▶ **Work up a full business case**, along with a full risk assessment of the option most likely to match the funding available.

This project was funded by the Environment Agency's Water Environment Improvement Fund

You can read the full report online at cornwallwildlifetrust.org.uk/coastalpartnerships

