

## Make-up of the Catchment Partnership and its links to other stakeholders

The CCP is composed of representatives of distinct sectors, all with an interest in and influence over the management of Cornwall's water environment.



### Cornwall Catchment Partnership

#### Statutory

National Government (Natural England, Environment Agency), Local Government (CC, LNP, LEP and HWB), Water Undertaker (SWW)

#### Key Sectors

Farming, Fishing, Forestry, Industry, Major Landowners, Tourism and Recreation

#### Secondary Stakeholders

Business, Research Institutions, Third Sector (voluntary/ community groups), Campaign Groups and Lobbyists

Through the active participation of our core members and its wider engagement, the CCP aims to significantly influence policy and practice by embedding a catchment based approach to improving the water environment within the operations and activities of all its stakeholders.

## Development Strategy

The Cornwall Catchment Partnership has adopted a three year Development Strategy within which it sets out:-

- what partnership means within the CCP and how it works collaboratively
- how it is governed
- what and how it plans to deliver
- how it is and can be funded
- how it will engage and communicate
- how it is to be evaluated and its progress and impact monitored

This and detailed Action Plans around specific areas of work can be accessed at: <http://www.catchmentbasedapproach.org/> or by contacting [catchmentpartnership@cornwallwildlifetrust.org.uk](mailto:catchmentpartnership@cornwallwildlifetrust.org.uk)

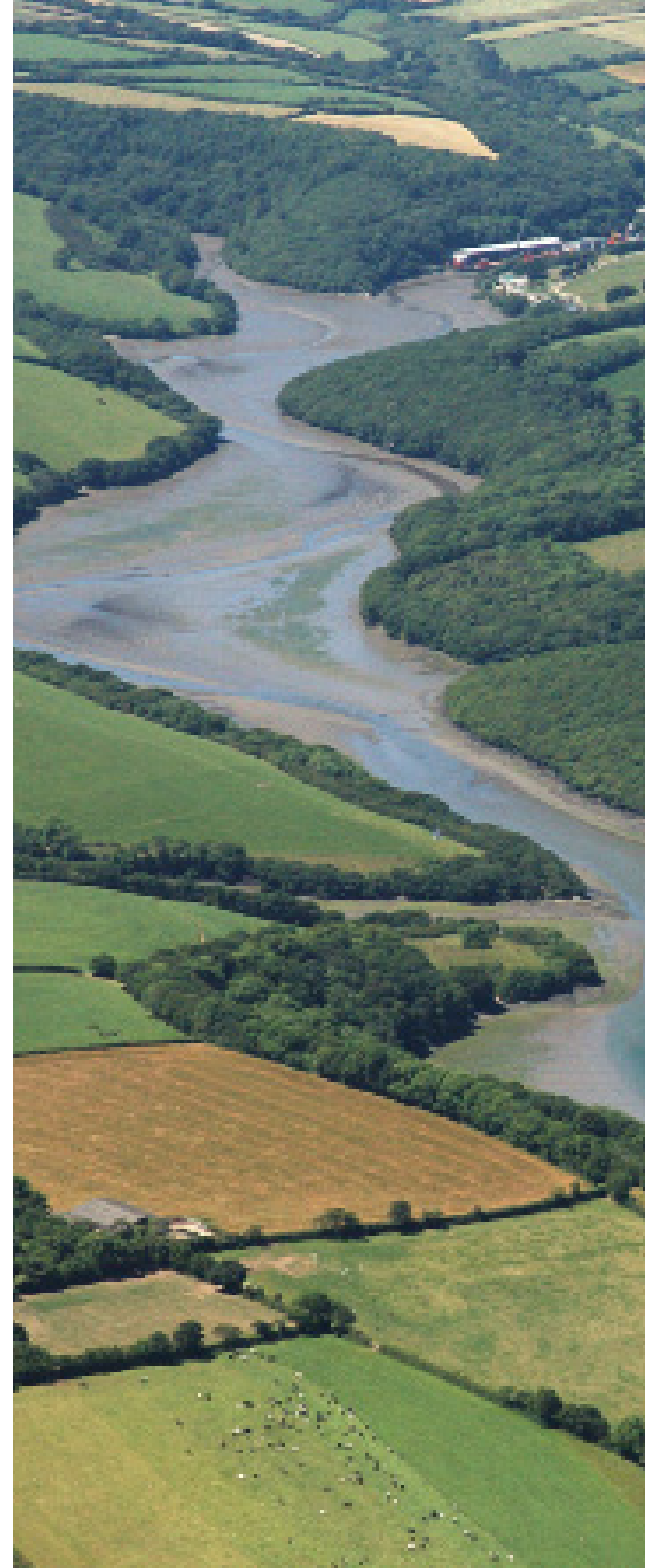
Part of:  
**CORNWALL & ISLES OF SCILLY**  
LOCAL NATURE PARTNERSHIP



**Cornwall Catchment Partnership**

Hosted by:  
 **Cornwall Wildlife Trust**

Cover image courtesy of Steve Hartgrove



**Cornwall Catchment Partnership**

## Strategic Intent

### Our vision is..

a sustainable, clean  
water resource  
throughout  
Cornwall for people  
and for wildlife -  
a responsibility  
shared by one and all

## The Cornwall Catchment

**Partnership (CCP)** was set up in 2014 in response to Defra's policy framework to deliver a better quality water environment through catchment-based engagement, planning and delivery.

Our aim is to improve the water environment throughout Cornwall. We will do so by working collaboratively with our key members and other stakeholders on priority issues affecting our water resource.

We sit within the Cornwall and Isles of Scilly Local Nature Partnership (CIOSLNP) as its water focus group and are one of the main routes to

delivering the UK commitment under the European Water Framework Directive (WFD) through Cornwall's Environmental Growth Strategy. We promote a catchment-based approach in all appropriate areas of planning, development and resource management throughout Cornwall.

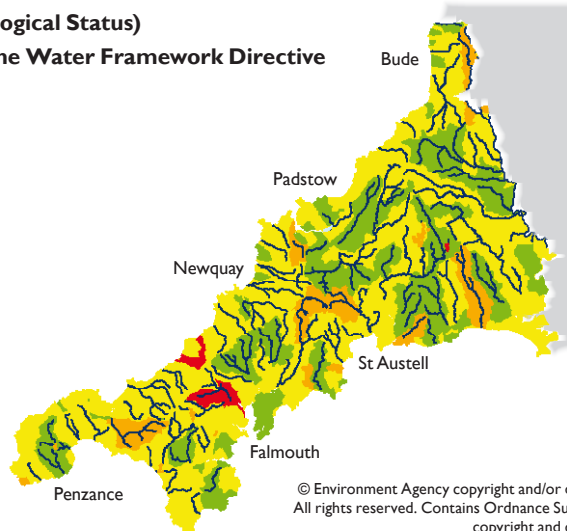
Through the Local Nature Partnership, we have strategic links with the Local Enterprise Partnership (LEP), the Health and Well-being Board and Cornwall Council. At a local level, we will encourage the delivery of positive, sustained outcomes, focusing on geographic areas defined by surface water hydrology.

## Cornwall's Water Environment

There are over 300 surface water bodies in Cornwall all of which, due to their proximity to the sea, have an impact on coastal waters and the marine environment. They are grouped into 14 Operational Catchments. The quality of water in many of these water bodies is not as good as it could be.

### Water Quality (Ecological Status)

from Cycle One of the Water Framework Directive



© Environment Agency copyright and/or database right 2015. All rights reserved. Contains Ordnance Survey data © Crown copyright and database right 2015.

## Our over-arching strategic outcome is...

**by 2027, our water bodies will be healthy ecosystems supporting the livelihoods and lifestyles of the people of Cornwall and its wildlife, managed through collaboration between communities, government and businesses**

## Cornwall Catchment Partnership's Strategic Shared Outcomes

Four shared outcomes will determine the ways in which we will access funding, communicate with our stakeholders and measure our impact. A number of cross-cutting themes will guide where and how successful outcomes will be achieved.

| Shared Outcomes  | Reduced point source pollution   | Reduced diffuse pollution | Sustainable water resources | Flood alleviation through land management |
|--|--|---------------------------|-----------------------------|---|
| Cross-cutting Themes   | i) Support key objectives of EU Water Framework Directive:- to prevent deterioration in water status; to achieve good status in WFD water bodies by 2027 |                           |                             |   |
|  | ii) Improved Water Quality for priority sectors and geographical areas e.g. Drinking Water Protected Areas <sup>1</sup>                                  |                           |                             |   |
|  | iii) Engagement and understanding of people and communities through good communication leading to informed involvement and local action                  |                           |                             |   |
|  | iv) Integrated land use and management to deliver multiple benefits and strengthen resilience  |                           |                             |   |
|  | v) Delivering environmental growth   |                           |                             |   |
| <p><sup>1</sup> The Water Framework Directive and other European Directives require various areas to be protected by special designations.</p> |  |                           |                             |   |