

Shoresearch Annual Report 2022



Shoresearch is a national citizen science program by the Wildlife Trust. Cornwall Wildlife Trust has been running Shoresearch for 11 years so far, with 2022 definitely not disappointing! Shoresearch aims to monitor the biodiversity (plants, animals, and habitats) of our coastline and engage people in the brilliant marine environment!

If you would like to get involved, please email:
shoresearch@cornwallwildlifetrust.org.uk



Cornwall
Wildlife Trust



9416

Individual records

Over 75
volunteers!

Different Species

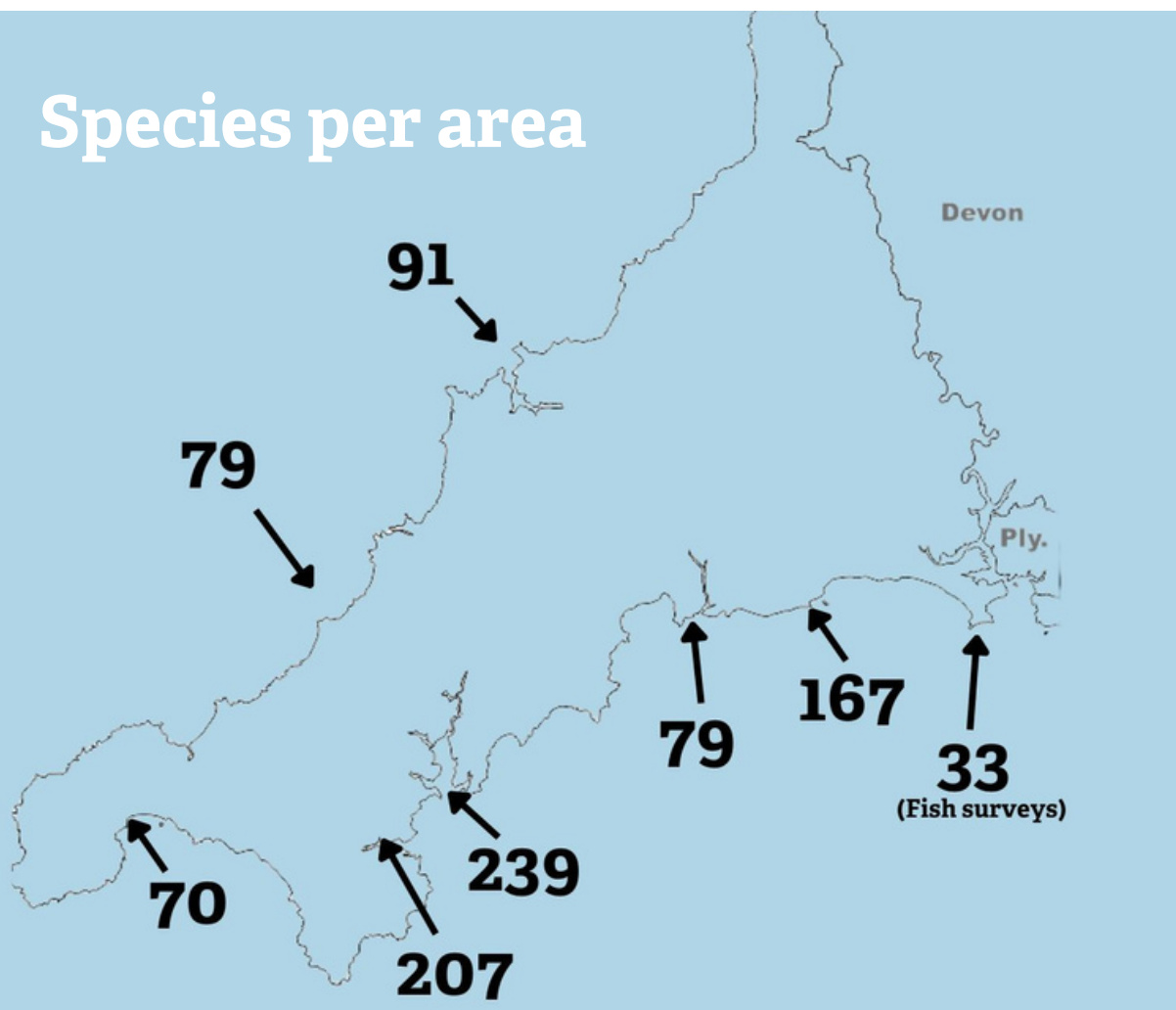
453

A massive thank you to all the amazing volunteers (old and new) we have had the pleasure of working with over 2022! Shoresearch would not be possible without you all!

43

Days of surveying

Species per area



SSSI's

At the start of 2022, we carried out a new project to investigate the suitability of using the Shoresearch methodology to monitor marine Sites of special scientific Interest In Cornwall. 7 survey days were carried out within the Fal and Helford SSSI's, repeating a survey last carried out in 2012. The Shoresearch app was used to record all the data collected and Natural England staff got involved as well as a team of our fantastic volunteers.

The surveys went really well, with the weather surprisingly mild and kind to us! A very detailed report has been produced which we hope to have published in 2023.

Findings from these surveys highlighted that the shores have changed and in some places, entire biotopes were missing - particularly *Fucus spiralis* and *Ascophyllum nodosum*. There were far more warm water species and an big increase in non native seaweeds and pacific oysters.



Photo: Josh Symes



Photo: Cath Francis



Photo: Josh Symes



Photo: Josh Symes

Fish Surveys

Working with Environment Agency and Natural England we trailed use of a modified Shoresearch methodology to carry out two detailed rocky shore fish surveys within the Tamar SAC, held at Hooe Lake and Sandways beach in Cawsand Bay.

The surveys trailed baited fish traps in large pools, net surveys within rockpools and along littoral fringe of the shore, and 5m squared timed searches within boulder areas of the shore recording fish present. The work, which is part of the national project; marine Natural Capital Ecosystem Assessment is going to be continued in 2023 and the methodology's further developed and tested with a further series of surveys. Watch this space!



Barnacle Surveying methodology

Barnacle surveying methodology was created for the SSSI surveys with Natural England, within the Fal and Helford during Jan and Feb 2022.

5cm x 5cm quadrats, with 5 quadrats in each biotope or zone, were photographed using good quality digital cameras, and the images were uploaded to a software program called BIIGLE. Following some expert tuition on barnacle identification by Mike Puleston of MBA, volunteers Mary, Cath and Sally began the difficult task of identifying as many of the barnacles as possible. The software allowed them to label all the barnacles photographed and to assign a species, and also allowed totals to be downloaded so that the results could be analyzed. The data collected showed that the non-native barnacle *Austrominius modestus* (Darwins barnacle) has increased in numbers locally and the northern barnacle *Semibalanus balanoides* is now very rare, with *Chthamalus* sp. barnacles the dominant species in most places. Massive thanks to Mary Ledlie for leading on barnacle analysis and for devising such a great method of carrying out the survey and analysis of the results.

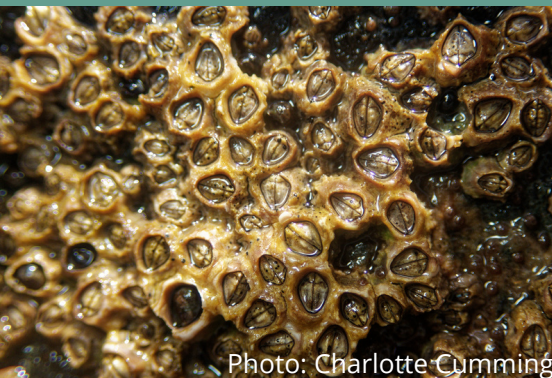


Photo: Charlotte Cumming



Photo: Charlotte Cumming



Photo: Charlotte Cumming



Photo: Josh Symes

Training

We've continued to train Cornwall's marine groups (including Bude Marine Group, and Mounts Bay Marine Group) in the Shoresearch methodology, as well as using the new Shoresearch app!

Other training events included a brilliant seaweed ID day with Esther Hughes, where we were taught about many different seaweeds found on our coasts, how to ID them, and even how to press them for preservation

Training dates for 2023 are now available, with more added if necessary!

If you're part of a marine group and would like to get trained up, or a recap on Shoresearch and the app, please get in touch:
shoresearch@cornwallwildlifetrust.org.uk



Shoresearch week 2022



Photo: Charlotte Cumming



Photo: Zeni Hayton

Every year for Shoresearch week, we survey Cornwall's original Voluntary Marine Conservation Areas (VMCA's) over 5 days! the week started on the sheltered Helford estuary at Prisk cove, with the second day at Looe's vast pebble and seaweed covered shores at Hannafore. Fowey's Readymoney cove was our third survey, a short but interesting shore, with even some cup corals tucked away around the rockface! Polzeath was the ideal place to find some beautiful St Pirans crabs at Cowrie Cove, with the week ending in St agnes on the beautiful exposed shores of Trevaunance Cove.



Polzeath



St Agnes



Helford



Looe



Fowey

Thank you Josh & welcome Zeni



Zeni



Josh

This year we said goodbye to Josh as the Shoresearch volunteer coordinator, as he goes traveling, but he is sure to be around at future surveys!
Zeni is a Marine Zoology student, rockpool Rambler, and sea slug lover, and has taken over Joshes role as the new Shoresearch volunteer coordinator!

Thank you to our awesome Team Leaders



Mary



Adele



Charlotte

As always, its been a brilliant year for Shoresearch, from SSSI surveys to Shoresearch week and more!

See you on again on the shore in 2023!

From Matt and Zeni

To sign up to our newsletter visit:
<https://www.cornwallwildlifetrust.org.uk/shoresearch>